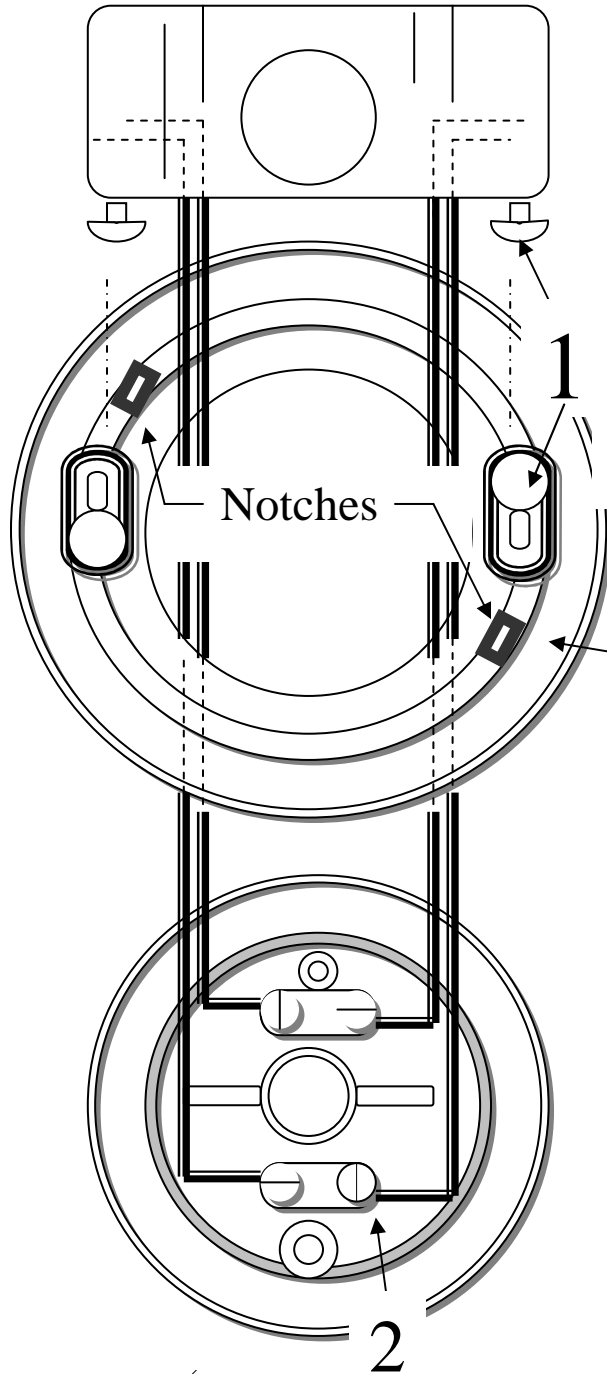


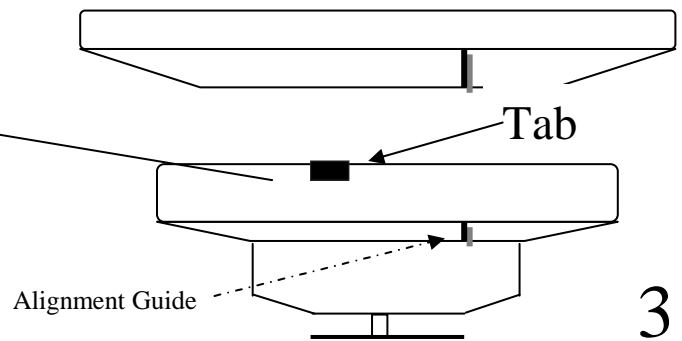


Model CR 135 W Heat Detector, Combination
Rate-of-Rise & Fixed Temperature, 135 ° F., White Finish

CSFM
Approved



The **Model CR 135 W** is a combination Rate-of-Rise and Fixed Temperature detector. A set of normally open contacts will close when the ceiling temperature increases at a (minimum) rate of 8.4 Celsius degrees (15 F. Degrees) per minute. Closing the contacts initiates the fire alarm sequence. Independent of the rate-of-rise operation, the fixed temperature portion consists of a spring-loaded plunger retained by a fusible alloy that releases when the ceiling temperature reaches 57° C, (135° F). When released, the plunger strikes the contacts and holds them closed.

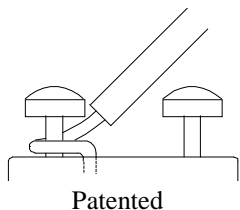


Fit Tabs into Notches
& Twist to the Right

Spacing (uninterrupted ceiling)
 Rate-of-Rise – 70' (21.3 m)
 Fixed Temperature 40' (12.2 m).

Contact Rating
 3A @ 125 VAC * 1A @ 28 VDC * 0.3A @ 125 VDC
 0.1A @ 250 VDC

Diameter 5.25" (13.4 cm) **Height** 2.0" (4.85 cm)
Weight 0.34 lb (156 gm)



All wiring must be installed in compliance with the local Electrical Code using approved cable, AWG 18 minimum. Begin electrical connections by stripping approximately 1" (2.5 cm.) from the end of each wire. Insert the stripped end into the wire-retaining hole in the terminal bar, wrap clockwise around the terminal screw, and tighten. Circuit wiring must be broken at each terminal to ensure proper supervision.