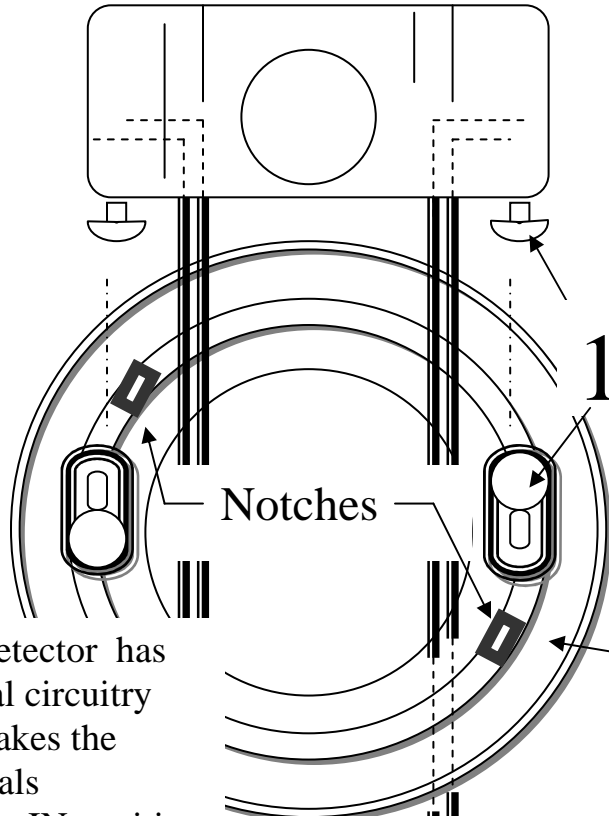




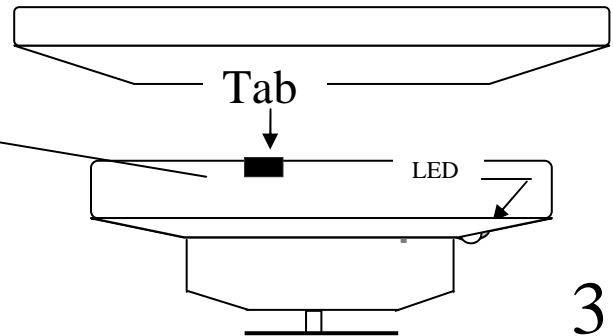
Model CR 135 LED LED-Indicating Heat Detector, Combination Rate-of-Rise and Fixed Temperature, 135°F.

The **Model CR 135 LED** is a combination Rate-of-Rise and Fixed Temperature detector. A set of normally open contacts will close when the ceiling temperature increases at a (minimum) rate of 8.4 Celsius degrees (15 F. Degrees) per minute. Closing the contacts initiates the fire alarm sequence and will illuminate the LED (steady "on") located in the plastic enclosure. The LED will remain lit until the system is Reset. The fixed temperature portion consists of a non-resetable spring-loaded plunger retained by a fusible alloy that releases when the ceiling temperature reaches 57° Celsius, (135 ° F). When released, the plunger strikes the contacts and holds them closed.

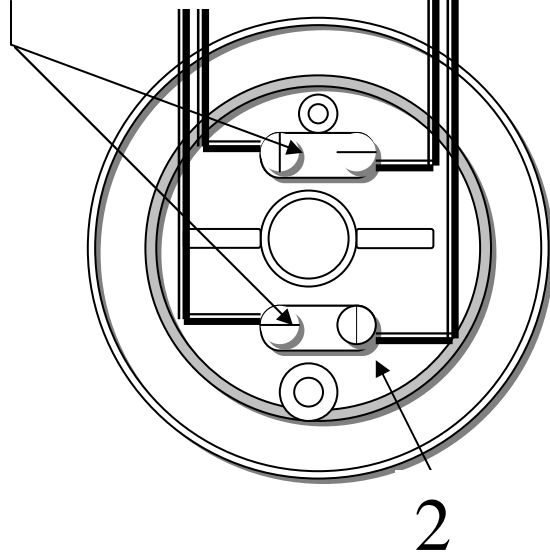
Note: The LED will pulse at app. 1 pulse per 5 seconds in the standby (non-alarm) mode.



This detector has internal circuitry that makes the terminals Polarity Insensitive



Fit Tabs into Notches & Twist to the Right



Spacing (uninterrupted ceiling)

Rate-of-Rise – 70' (21.3 m)
Fixed Temperature 40' (12.2 m).

Contact Rating

3A @ 125 VAC * 1A @ 28 VDC * 0.3A @ 125 VDC
0.1A @ 250 VDC

Operating Voltage 16-27VDC

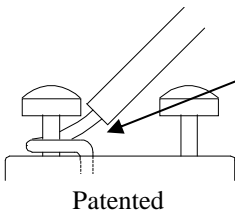
Current (Standby) 150 micro Amps

Current (Alarm) 15 mA

Diameter 5.25" (13.4 cm)

Height 2.0" (4.85 cm)

Weight 0.34 lb (156 gm)



Patented

All wiring must be installed in compliance with the local Electrical Code using approved cable, AWG 18 minimum. Begin electrical connections by stripping approximately 1" (2.5 cm.) from the end of each wire. Insert the stripped end into the wire-retaining hole in the terminal bar, wrap clockwise around the terminal screw, and tighten. Circuit wiring must be broken at each terminal to ensure proper supervision.